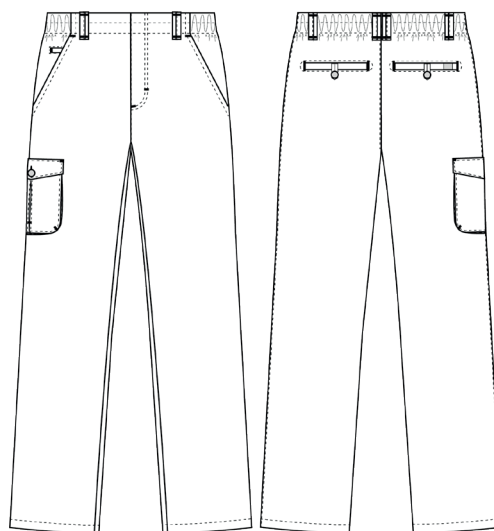


# Perfect fit

## 505021-02 UNISEX PULL-ON CHINO (Ordernumber: 505021-02-0000)

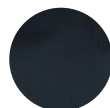
Pull-on chinos with ideal fit and a very nice silhouette. Elastic throughout the waistband which provides a good comfortable stretch. Closable pocket on the thigh.



### COLOURS:



0000-White



0072-Black

### FACTS:

- Smart details
- Elastic at the waist in pull-on pants
- Closable cargo pocket on the thigh
- Buttoned back pockets
- Bartack in contrast colour
- Fashionable contrast bindings inside the pants



**QUALITY:** 65/35% polyester/cotton - 210 g/m<sup>2</sup>

**STOCK SIZES:** XS - 4XL

**CERTIFICERING & OUR ICONS:**



STANDARD  
100  
2076-306  
DTI

www.oeko-tex.com



www.oeko-tex.com

STeP



www.oeko-tex.com

MADE IN  
GREEN  
CB3VTM7MX  
DTI



### FINISHED MEASURES BEFORE WASHING:

		64	70	80	88	96	104	112	120	128	136	144	
	Stamping size	2XS	XS	S	M	L	XL	2XL	3XL	4XL	5XL	6XL	Tolerance
<b>A</b>	1/2 Waist width	30	33	36	39	43	47	50	54	58	61	65	+/- 2,0 cm
<b>B</b>	1/2 Hip width	46,2	49,2	52,3	55,5	59,8	63,6	67,8	71,6	75,7	79,8	84	+/- 1,5 cm
<b>E1*</b>	Rise (Help measure for hip)	15	15	15	15	15	17	17	17	17	17	17	
<b>C</b>	Side length	101	102	103	104	105,5	107	108,5	110	111,5	113	114,5	+/- 2,0 cm
<b>D</b>	Inseam length	82	82	82	82	82	82	82	82	82	82	82	+/- 1,5 cm

Please note: Final measures will depend on tolerance in garment making (See above) and measuring method (+/- 0.5 cm)  
Also note: Washing and drying conditions in industrial laundering can further more give a shrinkage up to 3-5% (Depending of material)  
All models meet the requirements industrial laundry. Washing instructions on our homepage [www.nybo.com](http://www.nybo.com)

### DOMESTIC LAUNDERING:



PURVEYOR TO H. M. THE QUEEN OF DENMARK  
**NYBO**  
WORKWEAR SINCE 1962

