

# Taste

## 101008-01 LADIES' CHEF JACKET, 1/4 SLEEVE (Ordernumber: 101008-01-0000)

Stylish, fitted short-sleeved women's chef jacket with a specially developed fit that enhances comfort. The jacket has short sleeves, a pencil pocket on the left sleeve, and a strap at the neck for a chef's apron. The fabric is durable.

### COLOURS:



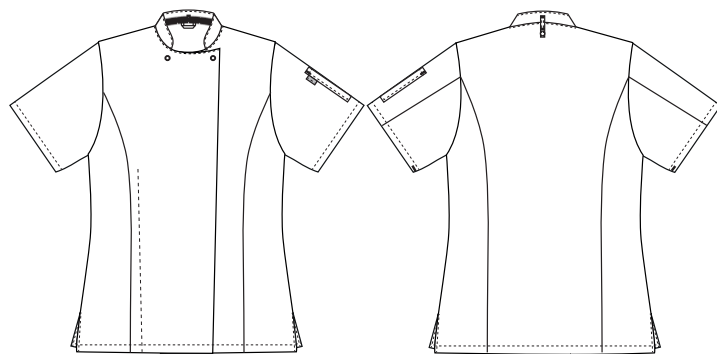
0000-White



0042-Grey



0072-Black



### FACTS:

- With functional details
- Good and comfortable fit
- Practical pocket on the sleeve
- Neck strap for chef's apron
- Mandarin collar
- Durable and dirt-resistant quality
- Perfect match for all our chef trousers



**QUALITY:** 65/35% polyester/cotton - 210 g/m<sup>2</sup>  
**STOCK SIZES:** XS - 4XL (5XL - 6XL special order)  
**CERTIFICATIONS AND OUR ICONS:**



STANDARD  
100  
2076-306  
DTI

www.oeko-tex.com



STeP

www.oeko-tex.com



MADE IN  
GREEN  
CB3VTM7MXY  
DTI

www.oeko-tex.com



### FINISHED MEASURES BEFORE WASHING:

		30	34	38	42	46	50	54	58	62	66	70	
	Stamping size	2XS	XS	S	M	L	XL	2XL	3XL	4XL	5XL	6XL	Tolerance
A	1/2 Chest width	43,8	47,7	51,7	55,6	60,8	66	72	78	84	90	96	+/- 1,5 cm
B	1/2 Bottom width	46,9	49,9	52,9	55,9	60,8	66,5	71,5	76,5	81,5	86,5	91,5	+/- 1,5 cm
C	Back length	69,6	69,6	71,6	71,6	71,6	73,6	73,6	75,6	75,6	77,6	77,6	+/- 1,5 cm
D	Sleeve length	30,6	30,6	30,6	30,6	30,6	30,6	30,6	30,6	30,6	30,6	30,6	+/- 1,0 cm

Please note: Final measures will depend on tolerance in garment making (See above) and measuring method (+/- 0.5 cm)  
Also note: Washing and drying conditions in industrial laundering can further more give a shrinkage up to 3-5% (Depending of material)  
All models meet the requirements industrial laundry. Washing instructions on our homepage [www.nybo.com](http://www.nybo.com)

### DOMESTIC LAUNDERING:



PURVEYOR TO H. M. THE QUEEN OF DENMARK

# NYBO

WORKWEAR SINCE 1962